

iCap™ Monitor

User Manual

EEG Enterprises, Inc.

586 Main Street

Farmingdale, New York 11735

TEL: (516) 293-7472 FAX: (516) 293-7417

Copyright © 2010-2011 EEG Enterprises, Inc.

All rights reserved.

The contents of this manual may not be transmitted or reproduced
in any form without the written permission of EEG.

Table Of Contents

About	1
Features	
<i>User Options</i>	<i>1</i>
<i>Monitor Grid Table</i>	<i>3</i>
<i>Caption Feed.....</i>	<i>4</i>
<i>Detailed View</i>	<i>4</i>

About

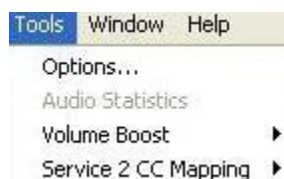
The EEG iCap Monitor client is a tool that enables broadcasters to monitor each encoder that is being accessed by the EEG iCap captioning client.

In addition to being able to view live captioning on any access code, Broadcasters can get an up-to-date view of the number of captioners on an access code, all encoders assigned to a specific access code that are currently connected to the EEG iCap network, the particular captioning company that is doing live captioning on that access code, and switchable audio which enables users to listen to a particular audio stream from an encoder on a specific access code.

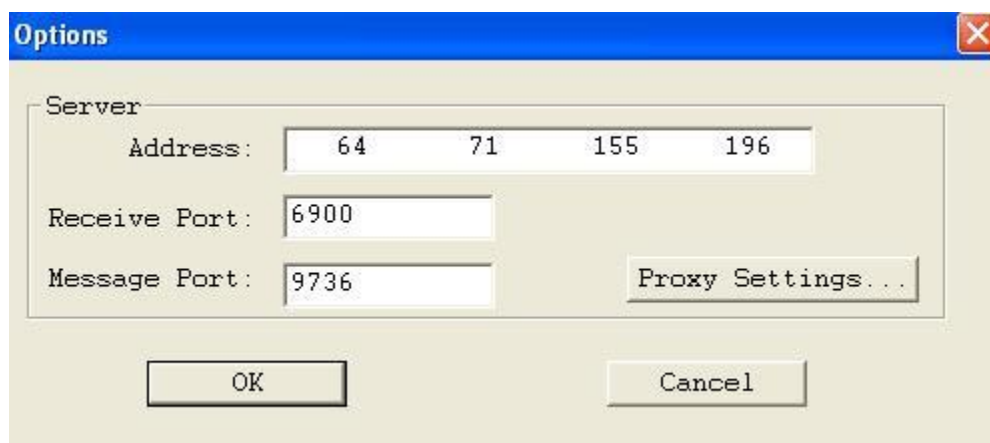
Features

User Options

By selecting Tools, there are 4 main options available to users of the iCap Monitor Client:

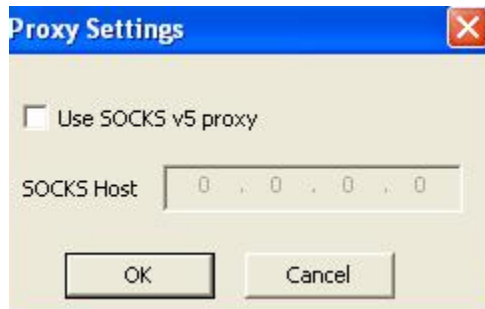


By clicking options:



The following dialog will appear, which contains the settings for access to the EEG iCap network. The default information contained in this dialog should never be changed unless users are instructed to do so by EEG Personnel.

If users wish to connect to the EEG iCap network through a proxy, they can do so by clicking Proxy Settings:



To enable proxy usage, click on the “Use SOCKS v5 proxy” checkbox and specify the SOCKS proxy host. Make sure your proxy host is configured to reach the EEG iCap Network using the information provided in the Options Dialog.

By clicking Audio Statistics:



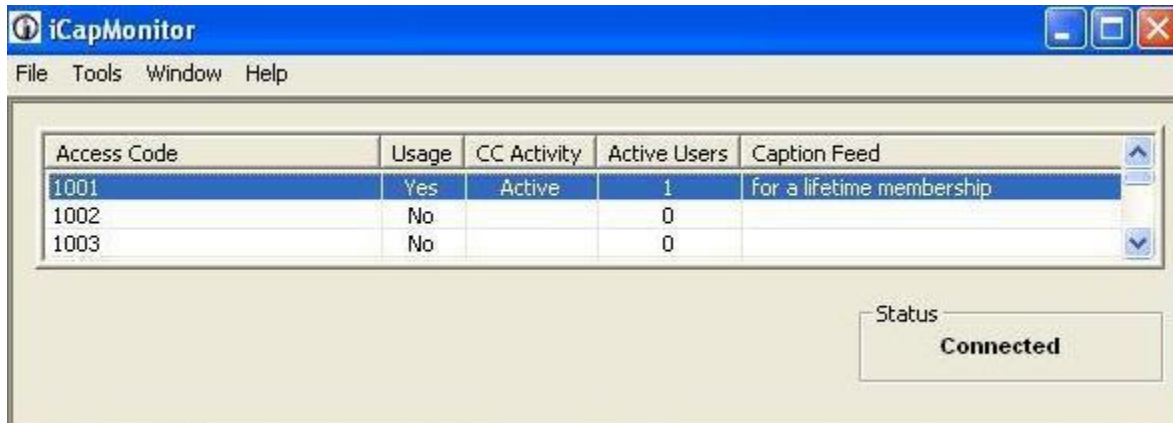
This is a dialog that contains information relating to the incoming audio stream traveling from an encoder, through the EEG iCap network, to the Monitor Client user. The primary purpose of this is to provide information to EEG personnel in regards to the Monitor Client user’s listening experience with encoder audio. This option is only available if a user is currently listening to an encoder audio stream.

The Volume Boost option allows users to increase the volume of the incoming audio stream from the Monitor Client itself. Users can choose between Off, Medium, and High.

Finally, there is the Service 2 CC Mapping option. This allows Monitor Client users to view captioning data coming from either the CC2 or CC3 channel, by selecting “CC2” or “CC3”. This setting is only applicable for access codes that have been registered as “Service 2”.

Monitor Grid Table

The Monitor Grid Table provides information about all the access codes that have been registered for a Broadcaster under the EEG iCap Network.



Access Code	Usage	CC Activity	Active Users	Caption Feed
1001	Yes	Active	1	For a lifetime membership
1002	No		0	
1003	No		0	

Status
Connected

The Grid Table provides the first level of information about an access code.

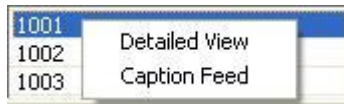
Users can check to see if a captioner, using the EEG iCap captioning client, has entered an access code by viewing the information provided by the “Usage” column. If there is at least one such captioner, a “Yes” will appear in the column.

In situations where captioners from differing companies are assigned to work on the same program, there will often be more than one captioner on an access code with one captioner ready to pass off captioning duties to another. To view the exact number of captioners on a particular access code, look in the “Active Users” column.

The “CC Activity” column indicates whether a captioner is ready to provide, or is currently providing, live captioning on a particular access code.

The status bar on the lower right-hand corner indicates whether a Monitor Client user is currently connected to the EEG iCap network. If the status does not say “Connected”, users will not receive up-to-date information in regards to their access codes.

To view the second level of information about an access code, users can right-click on a particular access code on the grid. By doing so, the following menu will appear:



a.) Caption Feed:

By selecting “Caption Feed”, users will be able to see a sneak peak of any upstream or live captioning on that access code.

b.) Detailed View:

By selecting “Detailed View”, a Dialog will pop up which will provide further information about an access code:



First, there is an expanded captioning window that allows the user to see up to 4 rows of captioning at the same time.

Users can listen to the encoder audio stream for the access code by clicking “Listen To Audio”. Users can also choose to mute the audio if they no longer wish to hear it. If multiple Detailed View windows are opened, users can simply click on “Listen To Audio” to listen to the audio stream belonging to the access code they are currently interested in without having to mute audio streams coming from other access codes they were listening on.

The window entitled “Encoders Online” shows the actual encoders that are currently connected to the EEG iCap Network that have been configured for that particular access code, including all primary and secondary encoders. Primary encoders are denoted by a (P) next to the encoder name.

Finally, the window on the lower left-hand corner indicates the captioning company of a captioner that is ready to provide, or is already providing, live captioning on that access code, if any such captioners currently exist.