

BCS Configuration For iCap

BCS must be configured to communicate with either a modem, for remote captioning, a direct connect, for local captioning to an encoder using a serial cable, or, in the case of iCap, a TCP socket connection which exists on the computer where the iCap PC client software and the writer software are installed.

To configure a TCP Socket connection using BCS, please use the following instructions and screen shot as an example.

Create a new Profile for iCap, click on the “Connections” tab as shown in Figure 1.

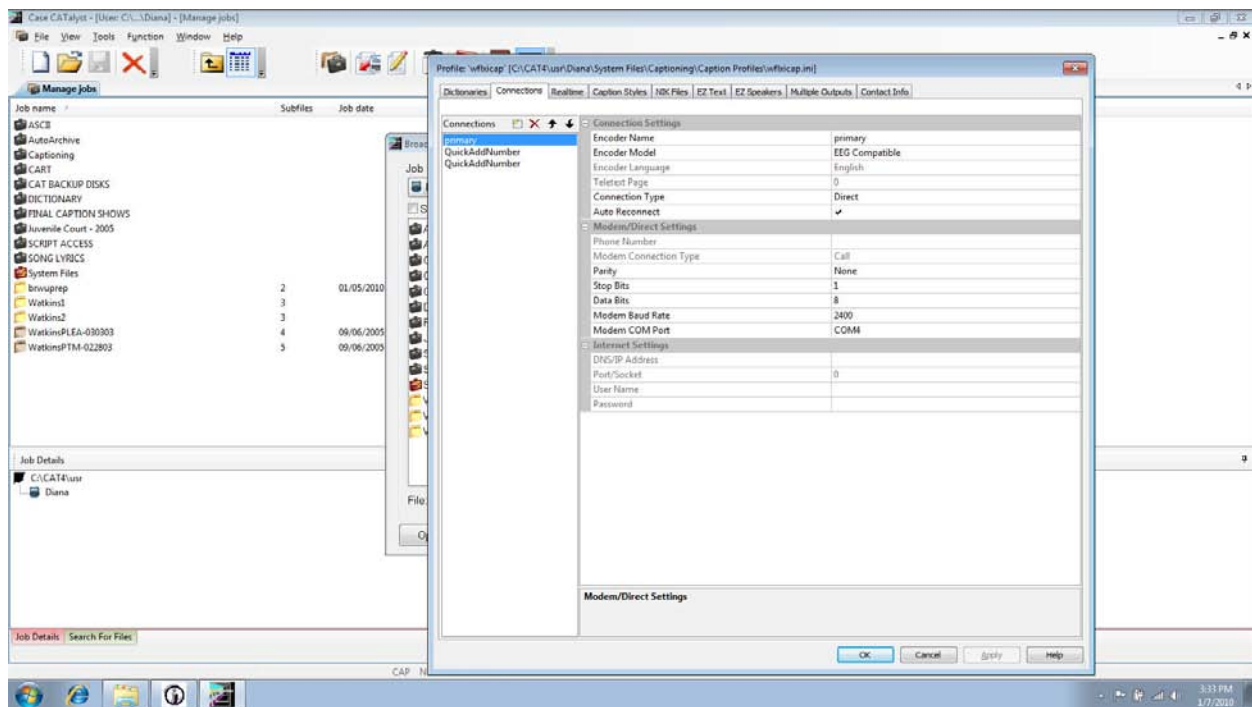


Figure 1 – BCS Configuration

To configure a TCP socket connection, under “Connection Settings”, “Connection Type”, select “Internet” as shown in Figure 2. The “Internet Settings” section will now be enabled and allow input. In “DNS/IP Address” enter: 127.0.0.1 which loosely translates in network-speak to “me”. This IP address is used for network communication that is local to one computer. Since the network communication traffic, in this case, is between the writer software and the iCap software, 127.0.0.1 is the IP address that should be used. In “Port/Socket” enter: 9740. No User Name or Password is required. Click on “OK” to save the iCap profile settings.

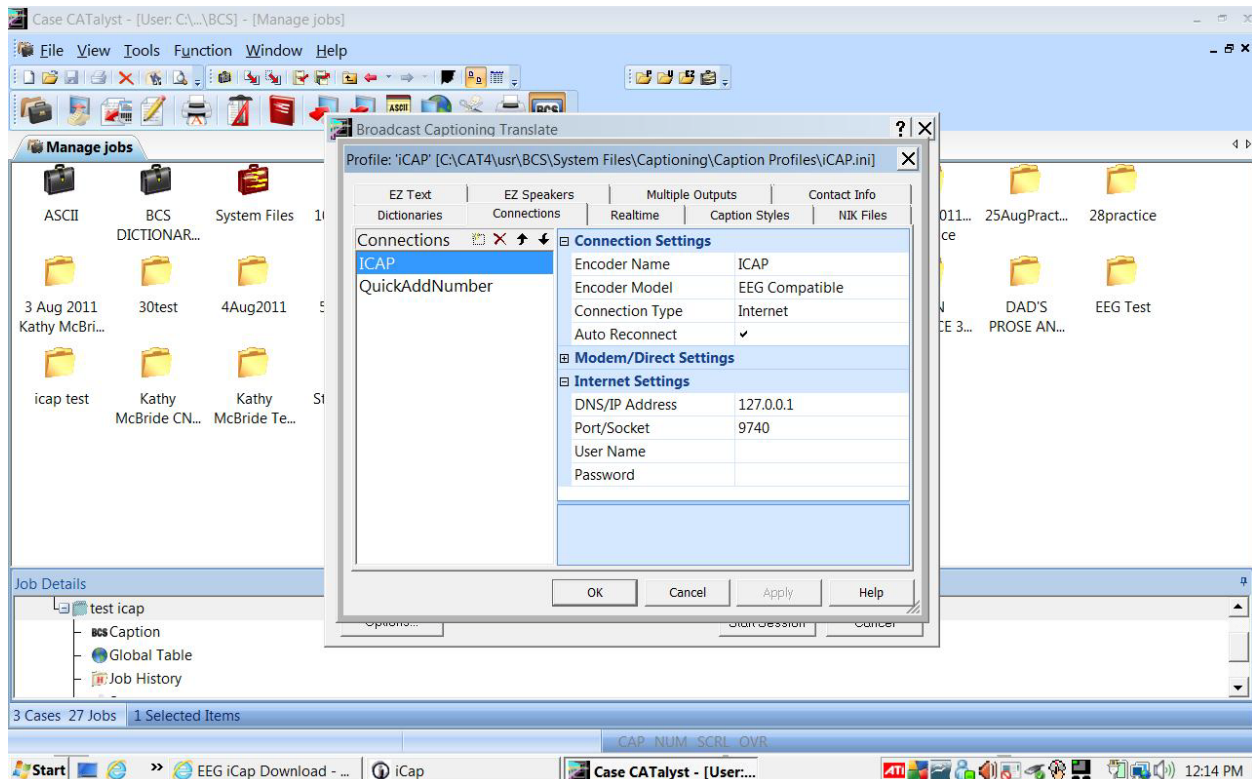


Figure 2 - iCap Communication Configuration

After opening iCap, you must double click "Phone Numbers" to allow the BCS software to communicate with iCap (Similarly to how you would dial an encoder)

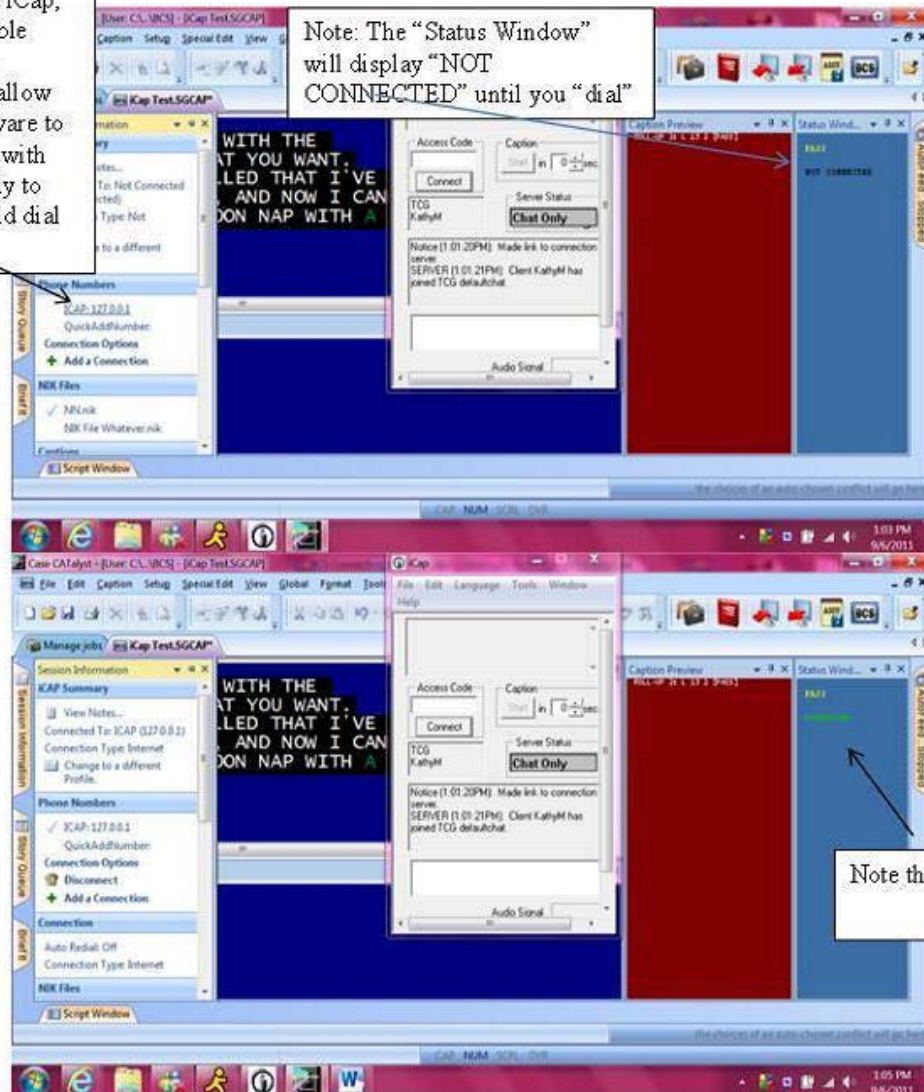


Figure 3 - BCS-iCap Connection Example

To caption using BCS and iCap, launch the iCap application first. iCap creates the socket used for communication between BCS and iCap. Once you have launched iCap and have logged in, launch BCS and select the iCap profile. As shown in the screen shot in Figure 3 in order to initiate communication between BCS and iCap you must double click the iCap profile name in "Phone Numbers". You will then see the "Connected" in the "Status Window". To test communication between iCap and BCS, from the iCap menu, select "Tools" then "Test Caption Input". To keep the iCap windows from disappearing behind the BCS window, select "Always On Top" from the iCap "Window" menu. Now, as you write in BCS, you should see the text you are writing in the "Test Caption Input" window as shown in Figure 4. This text will include some black boxes, which are the required unprintable caption commands generated by BCS.

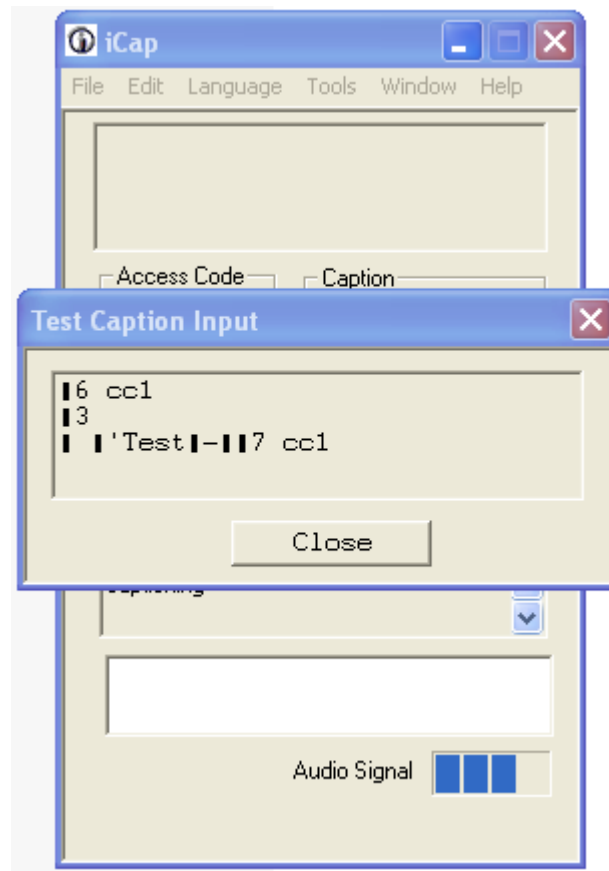


Figure 4 - Test Caption Input Example